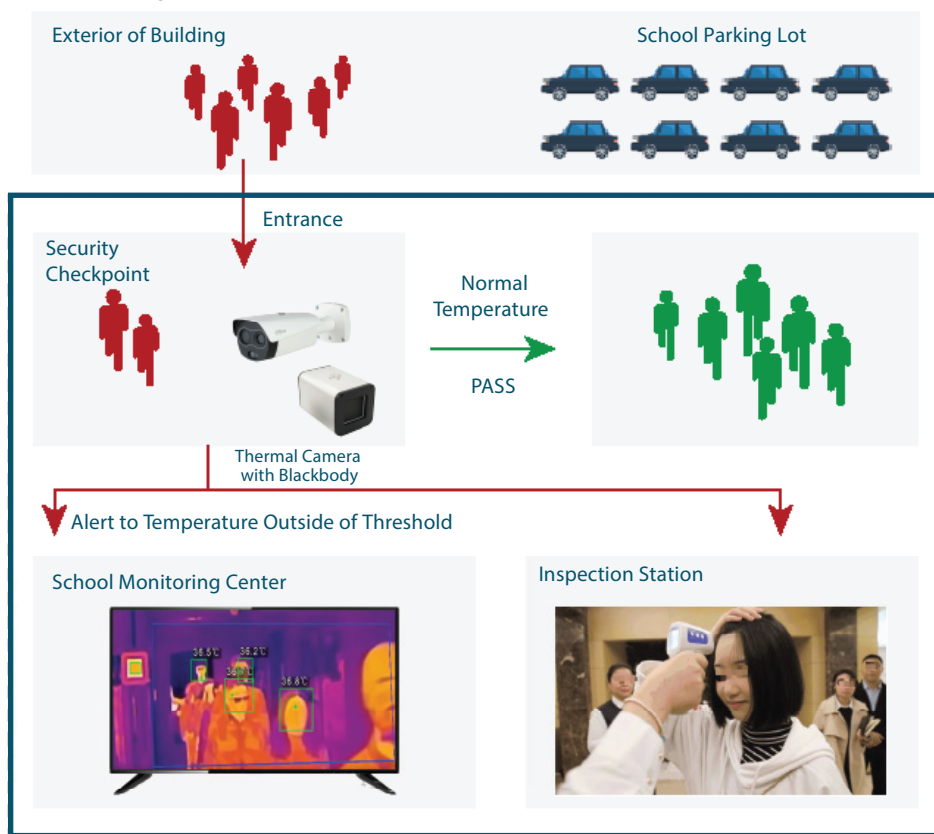


Thermal Temperature Monitoring for Education

Highlights:

Schools have a high population density, with a large amount of students and teachers. The temperature monitoring solution can provide a time-efficient way to assess potential high temperatures of large groups of people without personal contact.

Monitoring Process:



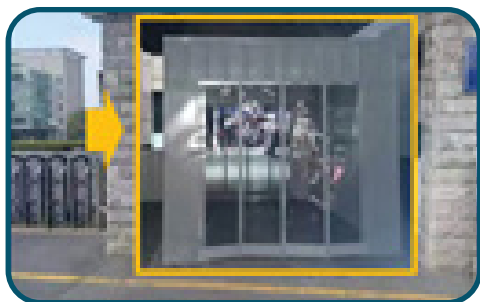
Pain Points:

- Monitoring the temperature of everyone individually is time consuming

Key Benefits:

- Set a threshold for temperature assessments and receive alerts automatically
- Monitor up to 30 people simultaneously

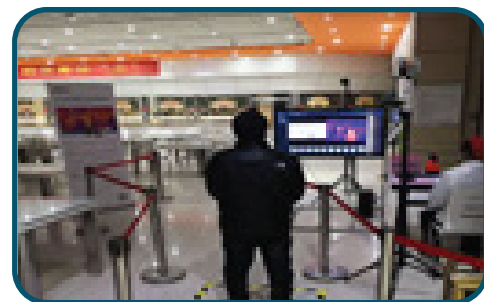
Scenario:



School Entrance

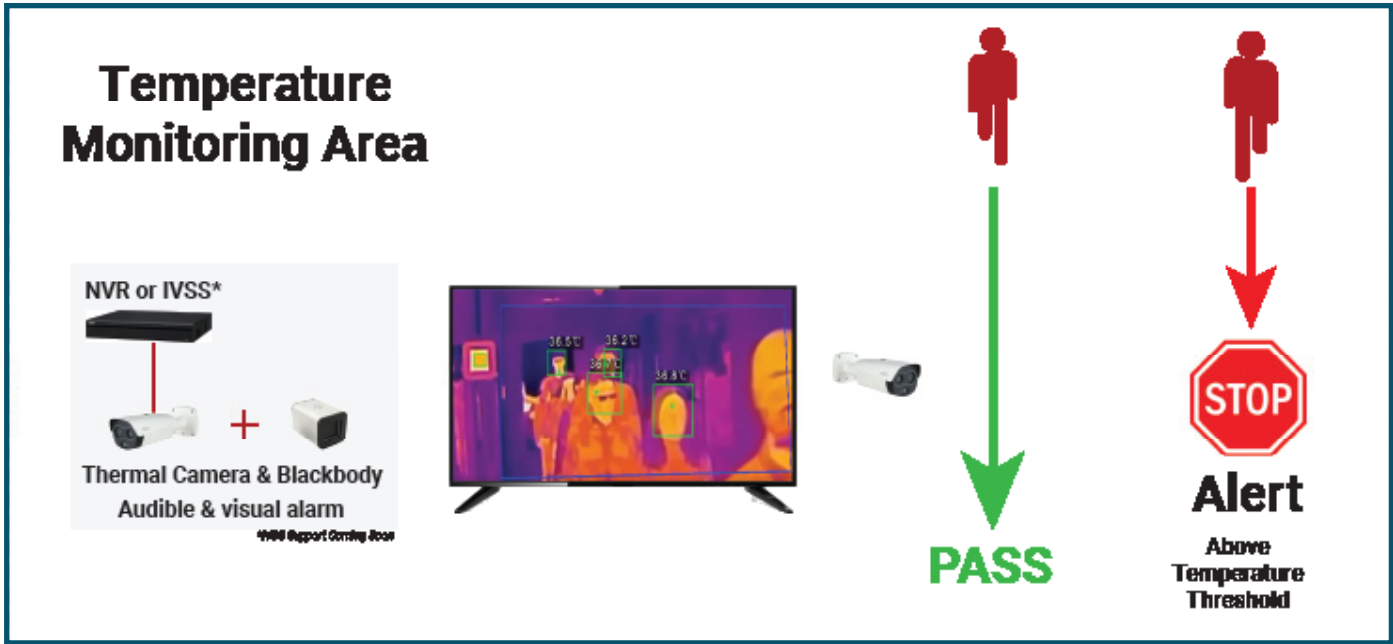


Dorm Entrance

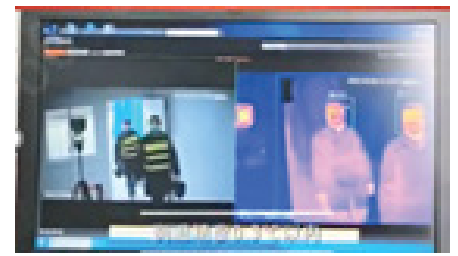
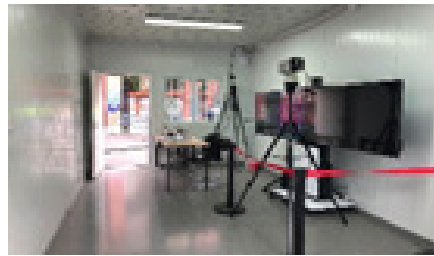


Dining Hall

Entrance



Success Cases: Fudan University, China



Success Cases: Thailand International Harrow School



Thermal Products



DH-TPC-BF5421-T
Hybrid thermal camera



JQ-D70Z
Blackbody Temperature Calibration Device



DHI-NVR5216-16P-1 4TB
16-Channel 1 U 16 PoE NVR

BRANCHES:

ADDRESS:
2342 Shattuck Ave. Suite 866
Berkeley, CA 94704
PHONE: (415) 874-7979

ADDRESS:
244 Madison Ave.
New York, NY 10016
PHONE: (646) 540-7337

ADDRESS:
3565 South Las Vegas Blvd.
Las Vegas, NV 89109
PHONE: (702) 333-4522

WEBSITE: asithermal.com
EMAIL: info@asithermal.com

Accessories



Camera PSU
DH-PFM320D-US DC12V 2A
DH-PFM321D-US DC12V 1A



RQW026-00
Connector (x2)



DHL43-F600
Monitor (x1)



VCT-999
Tripod (x2)

